



CPPR-ACE Winter School

Public Policy Research Methods



Deadline Extended

Click here to Apply

CENTRE FOR PUBLIC POLICY RESEARCH
No.28/3656, Sonoro Church Road, Elamkulam, Kochi, India 682020
Tel: +91 48 4646 9177, Fax: +91 48 4232 3895
www.cppr.in

ASIA CENTRE FOR ENTERPRISE
A-69, Hauz Khas, New Delhi 110016 India
Tel: +91 11 2653 7456/2652 1882 Fax: +91 11 2651 2347
www.acenetwork.asia

COURSE DETAILS

Centre for Public Policy Research (CPPR) and Asia Centre for Enterprise (ACE) are proud to launch the CPPR-ACE Winter School 2013. The first program of this series, Summer School 2012 was a huge success with participants from Europe, Central and South Asia. The Winter School will offer a three-week immersion in public policy research methods.

The objective of the program is to equip researchers with the tools and techniques necessary to produce outstanding research on important problems of public policy, with the goal of improving governance and the freedom and prosperity of citizens.

Course Period:

13 Jan 2013 - 01 Feb 2013

Venue: Cochin, Kerala, India

Course Fee: US\$ 1500 which includes tuition fees and accommodation and living expenses. Scholarships and travel grants are available for deserving candidates.

Participants of the Winter School will also have an opportunity to attend the first

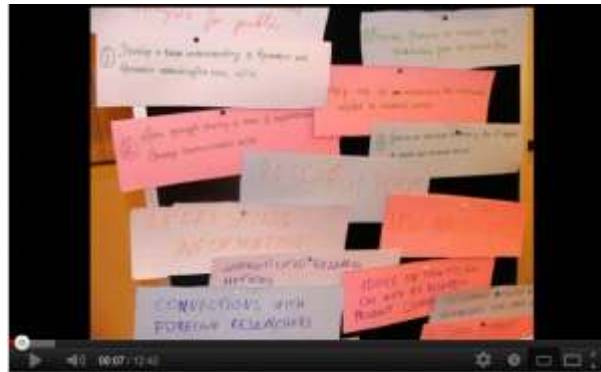
Asia Liberty Forum

to be held in Delhi from the 2-3 February 2013 and meet and network with Freedom Champions from Asia and the world.

TIME LINE

17 September 2012	: Application process opens
19 October 2012	: Application process ends
25 October 2012	: Announcement of selected candidates
13 January 2013	: Course Launch
31 January 2013	: Valedictory Session

[Click here to watch CPPR-ACE Summer School 2012 Video](#)



ACCOMMODATION

Participants are invited to stay in modern apartment hotel with shared room facilities at Riviera Suites in Cochin.

Grocery stores, supermarkets and restaurants are all to be found within walking distance. Facilities include wi-fi network, swimming pool and other recreational spaces with a water front view.



SYLLABUS

This three week-long course for aspiring public policy researchers seeks to equip them with the tools necessary to conduct original primary research and produce high-quality research that is not solely based on secondary data. The course parameters will broadly cover the following:

- General aspects of research methodology such as the fundamentals of research and formulating the Central Research Question
- Research analysis strategies
- Strategic communication skills
- The importance of legal sources in formulating public policy
- Market-oriented research and New Public Management.

SELECTION CRITERIA

All applicants must:

- have a background in, and possess good knowledge of public policy research, and have worked for a minimum of 3 years
- Be in possession of a valid undergraduate degree
- Be at least 23 years of age
- Be highly proficient in the English language; and
- Be willing to arrange for their travel documents from their country of arrival. The organizers will provide each participant with a call letter and offer partial/full travel grant if necessary.

Upon completion of the program, each participant is required to submit one or all of the following:

- *Research paper on their Central Research Question (6-8 months after the program)*
- *An op-ed in leading national or regional dailies, magazines (2 months after the program)*
- *A feature article in a journal, magazine or newspaper (2 months after the program)*
- *Participants are also expected to submit a report on how they have put to practice their learnings from the program within 6 months of the program.*

ORGANISERS

Centre for Public Policy Research (CPPR) is a think-tank based in Cochin, Kerala, India that engages in intensive research into social, economic and political issues. Their main areas of focus are Governance, Education, Health, Law, Livelihood, and Urban Reforms.

CPPR has carried out research projects and published policy papers for government bodies, private institutions and academic institutions. Their work has had a profound impact at the governance level. CPPR aims to contribute towards an equitable, socially just and environmentally sound society enriched by the principles of democracy and secularism

Asia Centre for Enterprise (ACE) is a social seed partnership launched by Atlas Economic Research Foundation and Centre for Civil Society to identify and support individuals and organisations that promote liberal ideas and policies in Asia. ACE will play the role in Asia that Atlas Foundation plays globally, acting as a mentor and intellectual angel investor.

FOR FURTHER INFORMATION CONTACT

Mr. Antony Dawson D'silva
Course Coordinator, CPPR
Email: winterschool@cppr.in
Tel: +91 484 64 69177
Fax: +91 484 23 23895

Ms. Baishali Bomjan
Associate Director, ACE
Email: ACE@ccs.in
Mobile: +91 85273 87708
Tel: +91 11 2653 7456



Click here to Apply

Or Visit www.acenetwork.asia www.cppr.in